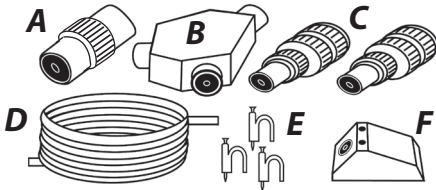


**A kit with everything needed to connect 2 TVs, in different locations, to a single aerial outlet or download.**

### Contents



- A: Coax coupler\***
- B: 'Y' splitter**
- C: Coax plug**
- D: Coaxial cable**
- E: Cable clips**
- F: Single surface outlet**

\* For connections to PVRs, VCRs satellite receivers etc.

### Installing

To link your second TV to your existing Aerial SEE Fig.1

To link your second TV to your existing aerial, PVR and satellite, digital box or cable TV if fitted SEE Fig.2

All your receiving equipment must be connected via your video, which must be connected to your TV via the RF coaxial Lead.

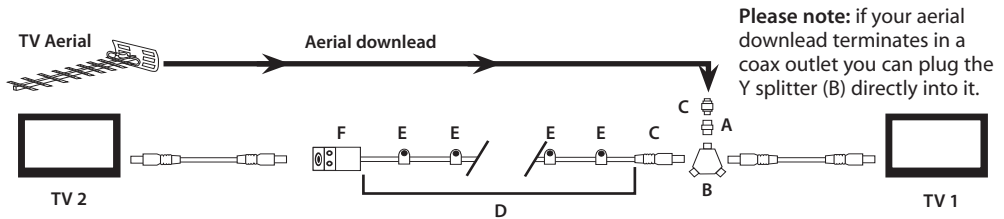
Both TVs will be independent, each will have a choice of the following:

- All TV channels picked up by your Aerial
- Any Video Recording being played;
- The Satellite Channel being received;
- The Freeview channel being received
- Any other subscription channel being received (Freeview, Cable, etc.)

**Coax plug wiring instructions**

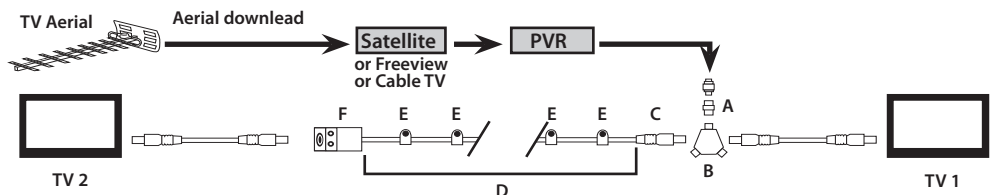
- 1 Unscrew coaxial plug housing and slide cap over cable.
- 2 Strip 23mm of cable outer sheath.
- 3 Strip 18mm of inner insulation to leave 5mm exposed
- 4 Undo screw on plug/clamp, slide clamp over inner wire & tighten screw. Reassemble plug
- 5 Trim inner wire flush with plug.

**Fig. 1 - TV Aerial**



**Please note:** if your aerial download terminates in a coax outlet you can plug the Y splitter (B) directly into it.

**Fig. 2 - TV Aerial / Video / Satellite / Cable TV / Freeview**



For further information or any queries please contact  
**Customer Careline: 08457 573 479**

Technical Support: [www.philex.com/support](http://www.philex.com/support)



Waste electrical products should not be disposed of with household waste. Please recycle where facilities exist. Check with your Local Authority for recycling advice.

